

# Omada Easy Managed Switch | Datasheet

## ES216G

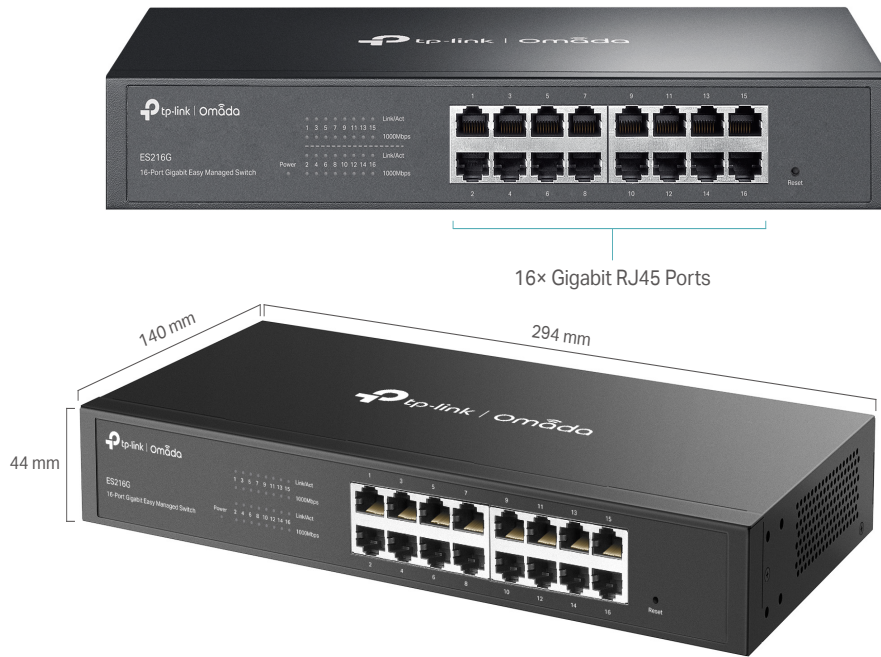
Omada 16-Port Gigabit Easy Managed Switch



## Highlights

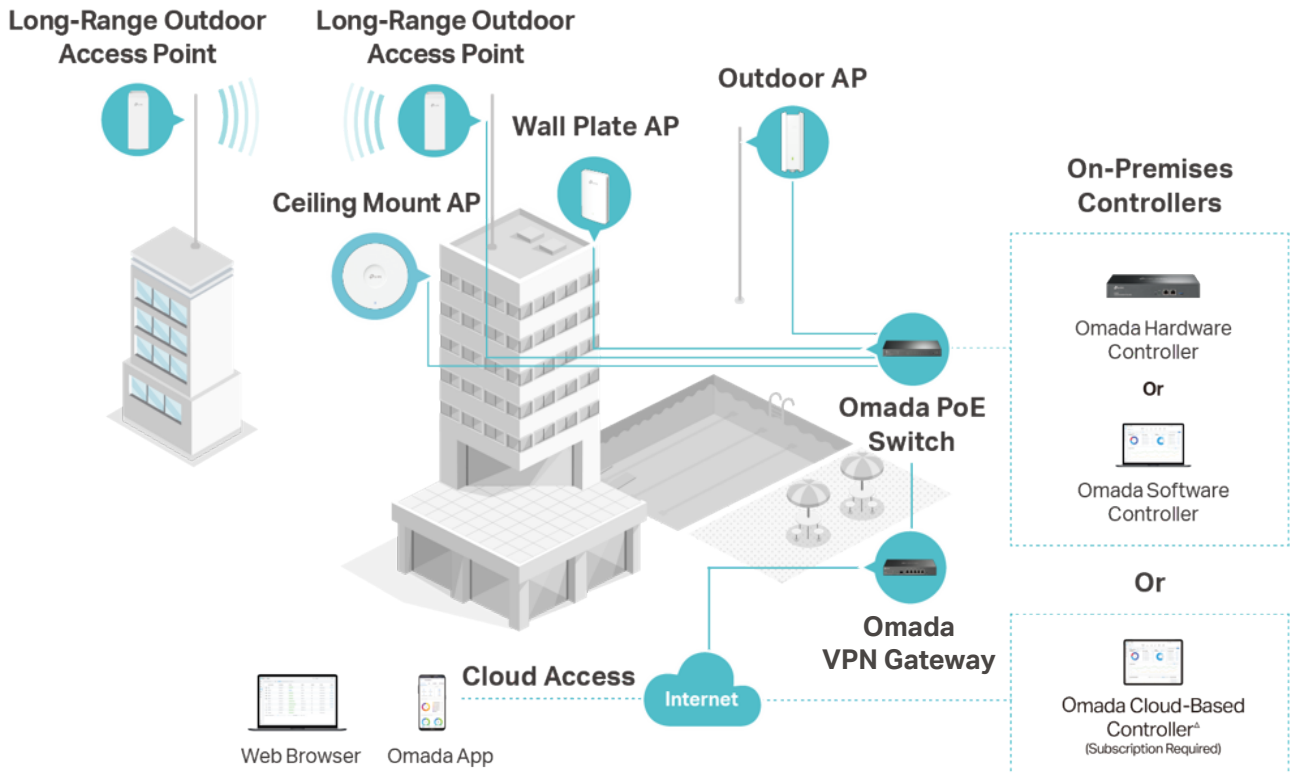
- 16× 10/100/1000Mbps RJ45 ports
- Easy to Use: Supports plug-and-play for instant connectivity and simple configuration for additional features
- Centralized Cloud Management via the web or the Omada app<sup>†</sup>
- VLAN, Port Isolation, Cable Test<sup>Δ</sup>, QoS<sup>Δ</sup> for reliable surveillance networking
- Automatic Loop Prevention and IGMP Snooping
- Fanless design for silent operation
- Durable metal casing and desktop/rack mounting design

# Product Pictures



# Omada Solution

Omada's Software Defined Networking (SDN) platform integrates network devices, including access points, switches, and gateways, providing 100% centralized cloud management. Omada creates a highly scalable network—all controlled from a single interface.



Hassle-Free Cloud or On-Premises Controllers



Zero-Touch Provisioning (ZTP)<sup>†</sup>



Multi-Site Cloud Management

Intelligent Monitoring

# Specifications

## Hardware Features & Performance

	Model	ES216G
General	Interface	16× 10/100/1000 Mbps RJ45 Ports
	Flash	64 Mbit
	Port Standard	IEEE 802.3i:10BASE-T Ethernet IEEE 802.3u:100BASE-X Fast Ethernet IEEE 802.3ab:1000BASE-T Gigabit Ethernet IEEE 802.3x: Flow Control IEEE 802.1p: Traffic Class Expediting and Dynamic Multicast Filtering IEEE 802.1q: Virtual Bridged Local Area Networks IEEE 802.1ab: Station and Media Access Control Connectivity Discovery (LLDP)
Performance	Switching Capacity	32 Gbps
	Packet Forwarding Rate	23.8 Mpps
	MAC Address Table	8K
	Packet Buffer	4 Mbit
	Transmission Method	Store and Forward
	Jumbo Frame	15 KB
Physical & Environment	Power Supply	100-240V~50/60Hz
	Max Power Consumption	8.4 W (110V/60Hz)
	Max Heat Dissipation	28.52 BTU/hr (110 V/60 Hz)
	Standby Power Consumption	4.2 W (110V/60 Hz)
	Surge Protection	±6 kV in common mode for Ethernet Ports
	ESD Protection	Air: ±8 kV, Contact: ±4 kV
	MTBF	2131140h @ 25°C
	Dimensions (W x D x H)	11.6 × 5.4 × 1.7 in (294×140×44 mm)
	Fan Quantity	Fanless
	Installation	Desktop/Rackmountable
	Operating Temperature	-5 °C to 50 °C (23 °F to 122 °F)
	Storage Temperature	-40 °C to 70 °C (-40 °F to 158 °F)
	Operation Humidity	10% to 90% RH, non-condensing
	Storage Humidity	5% to 90% RH, non-condensing
Certification	CE, FCC, RoHS	

## Software Features

Model	ES216G
SDN Support	<ul style="list-style-type: none"> <li>• Support Hardware Controller, Software Controller, Cloud-Based Controller</li> <li>• Automatic Device Discovery</li> <li>• Batch Configuration</li> <li>• Batch Firmware Upgrading</li> <li>• Unified Configuration</li> </ul>
L2 Features	<ul style="list-style-type: none"> <li>• Link Aggregation               <ul style="list-style-type: none"> <li>- Static Link Aggregation</li> <li>- Up to 4 aggregation groups and up to 8 ports per group</li> </ul> </li> <li>• Loopback Detection</li> <li>• Flow Control               <ul style="list-style-type: none"> <li>- 802.3x Flow Control</li> </ul> </li> <li>• Mirroring               <ul style="list-style-type: none"> <li>- Port Mirroring</li> <li>- One-to-One</li> <li>- Many-to-One</li> <li>- Ingress/Egress/Both</li> </ul> </li> <li>• Port Statistics               <ul style="list-style-type: none"> <li>- Port Mirror Status</li> <li>- Traffic Statistics</li> </ul> </li> <li>• 802.1ab LLDP</li> </ul>
L2 Multicast	<ul style="list-style-type: none"> <li>• IGMP Snooping               <ul style="list-style-type: none"> <li>- IGMP v1/v2/v3 Snooping</li> <li>- Fast Leave</li> </ul> </li> </ul>
VLAN	<ul style="list-style-type: none"> <li>• MTU VLAN</li> <li>• Port-Based VLAN</li> <li>• 802.1Q Tag VLAN               <ul style="list-style-type: none"> <li>- Max 32 VLAN Groups</li> <li>- 4K VID</li> </ul> </li> </ul>
QoS	<ul style="list-style-type: none"> <li>• 802.1p DSCP Priority</li> <li>• 8 Priority Queues</li> <li>• Priority Schedule Mode               <ul style="list-style-type: none"> <li>- WRR (Weighted Round Robin)</li> </ul> </li> <li>• Queue Weight Config</li> <li>• Bandwidth Control               <ul style="list-style-type: none"> <li>- Port-Based Rating Limit</li> </ul> </li> <li>• Storm Control               <ul style="list-style-type: none"> <li>- Multiple Control Modes (kbps/pps)</li> <li>- Broadcast/Multicast/Unknown-Unicast Control</li> </ul> </li> </ul>
Management	<ul style="list-style-type: none"> <li>• Web-based GUI</li> <li>• DHCP Client</li> <li>• Cable Diagnostics</li> </ul>

# Ordering Information

## Host Switch

Model	Description
ES216G	Omada 16-Port Gigabit Easy Managed Switch

## MC Series Media Converter

Model	Description
MC210CS	Gigabit Single-Mode Media Converter, up to 20 km, chassis mountable
MC200CM	Gigabit Multi-Mode Media Converter, up to 550 m, chassis mountable
MC220L	Gigabit SFP Media Converter, chassis mountable

## FC Series Media Converter

Model	Description
FC111A-20	100Mbps Single-Mode WDM Media Converter, up to 20 km, TX:1550nm, RX:1310nm, chassis mountable
FC111B-20	100Mbps Single-Mode WDM Media Converter, up to 20 km, TX:1310nm, RX:1550nm, chassis mountable
FC311A-2	Gigabit Single-Mode WDM Media Converter, up to 2 km, TX:1550nm, RX:1310nm, chassis mountable
FC311B-2	Gigabit Single-Mode WDM Media Converter, up to 2 km, TX:1310nm, RX:1550nm, chassis mountable
FC311A-20	Gigabit Single-Mode WDM Media Converter, up to 20 km, TX:1550nm, RX:1310nm, chassis mountable
FC311B-20	Gigabit Single-Mode WDM Media Converter, up to 20 km, TX:1310nm, RX:1550nm, chassis mountable

†These functions require the use of the Omada Controller. Zero-Touch Provisioning requires the use of the Omada Cloud-Based Controller (Omada Cloud Standard or Omada Cloud Essentials). Go to the Omada Cloud-Based Controller (Omada Cloud Standard) Product List or Omada Cloud Essentials Product List to find all the supported models.

△Cable Test and Port Qos are supported under Standalone Mode.