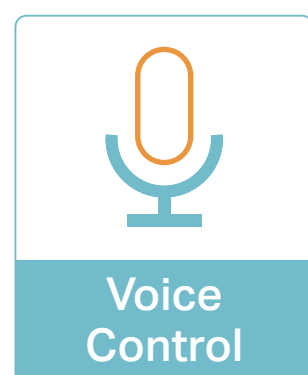
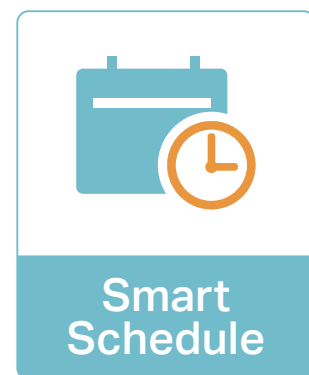
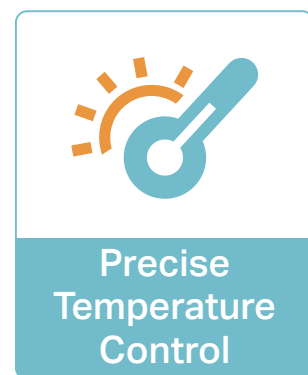
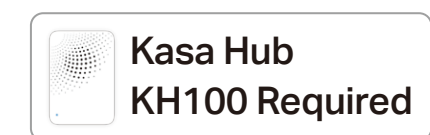




Kasa Smart Thermostatic Radiator Valve



KE100



Highlights

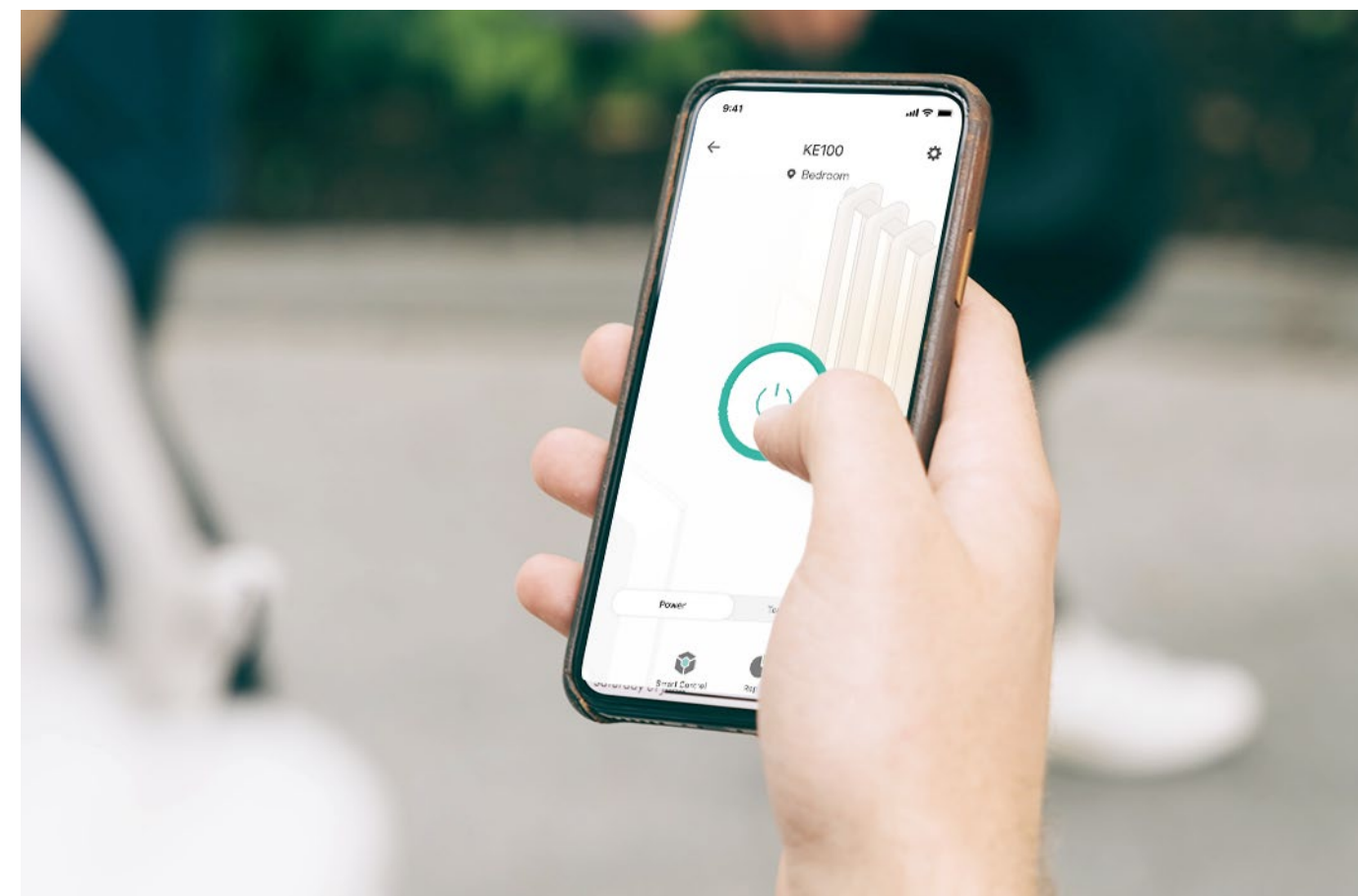
Saving Energy Made Easy

The Kasa Smart Thermostatic Radiator Valve allows you to set heating schedules based on your daily routines to make heating more efficient and lower your energy bills.



Control from Anywhere

Control all your radiators in your home from your phone. No more guessing if you left the heater on in an empty room.



Notes:

The app screen depicted is for visual reference only and does not necessarily represent actual product operation or app appearance.

Highlights

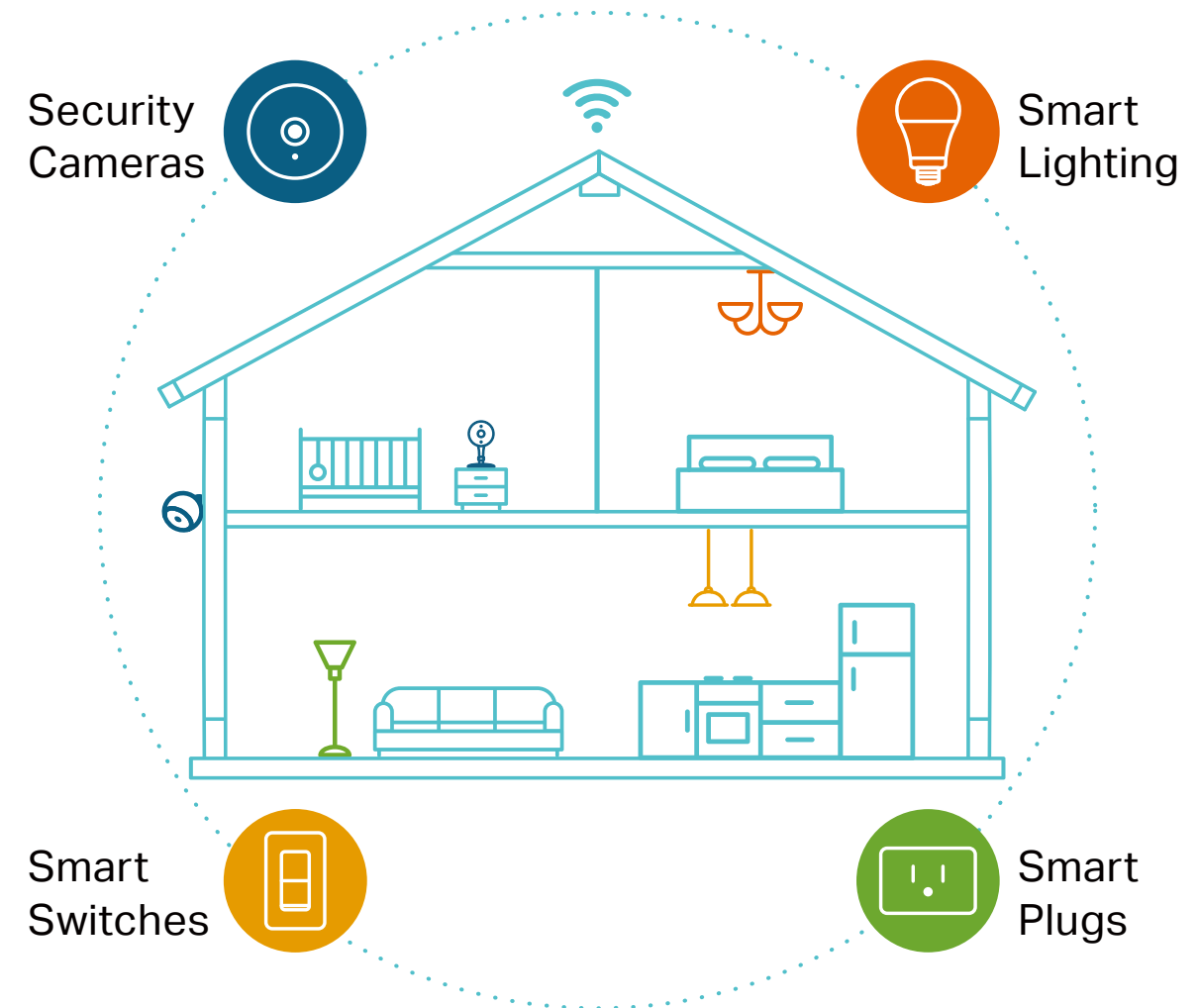
Hands-Free Voice Control

Ask Alexa or Google Assistant to fine-tune your home's temperature. No need to get up from the sofa or move a finger.



Your Home. One App.

Turn your home into a true smart home with Kasa Smart. Automate your lights and appliances with smart plugs, bulbs, and switches. Secure your home with Kasa cameras. Control it all from the Kasa Smart app.



Learn more at KasaSmart.com

Features



Easy to Install

- **Install It Yourself** – Simply replace your old radiator valve with Kasa and follow the step-by-step in-app guide for installation.
- **Compatibility** – Fits most existing radiator valves (M30 × 1.5 mm) with 3 adapters maximizing compatibility.
- **Up to 32 Radiators** – Each hub can connect and manage up to 32 radiators.



Easy to Use

- **Anywhere and Anytime** – Control your home temperature using the Kasa Smart app from anywhere, at anytime.
- **Smart Schedule** – Set schedules that automate your heating to suit your daily routine.
- **Voice Control** – Hands-free voice control via Alexa and Google Assistant.
- **Room-by-Room Comfort** – Set the perfect temperature in each room individually.



Added Benefits

- **Frost Protection** – Keep your pipes unfrozen and your house safe.
- **Child Lock** – Prevent children from managing your radiator accidentally.
- **Ultra-Long Standby** – Low-power wireless technology promises a longer battery life.

Specifications

Working Status

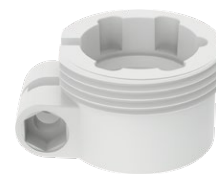
- Power Supply: 3.0V DC (2 x AA/LR6 batteries included)*
- Wireless Type: 868 MHz
- Requirements:
 - Kasa Smart Hub (KH100) is required.
 - Secured 2.4 GHz Home Wi-Fi Network
 - Mobile device running iOS10 and later or Android 5.0 and later.
 - The free Kasa Smart app and account.

***Note:** Do NOT use rechargeable batteries or 1.2V AA. AA/LR6 Alkaline batteries are recommended.

Valve Adapter Included



M30×1.5



RA



RAV



RAVL

General

- Package Contents:
 - 1 × KE100
 - 2 × AA/LR6 batteries
 - 1 × Quick Start Guide
 - 1 × RA adapter
 - 1 × RAV adapter
 - 1 × RAVL adapter
 - 1 × Cover Opener
- Dimensions: $\phi 56.5 \times 84$ mm ($\phi 2.2 \times 3.3$ in)
- Buttons: Control Knob, SYNC/Reset Button
- Operating Temperature: 0 °C ~ 40 °C (32 °F ~ 104 °F)
- Operating Humidity: 10%~90% RH, Non-condensing
- Certifications: CE, UKCA, RoHS

Specifications are subject to change without notice. All brands and product names are trademarks or registered trademarks of their respective holders.
©2022 TP-Link

www.tp-link.com